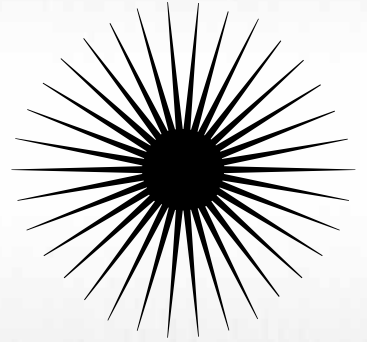


FORM
FOLLOWS
FUTURE



FORM FOLLOWS FUTURE



F

Should we look
to the past for
the future of
architecture?

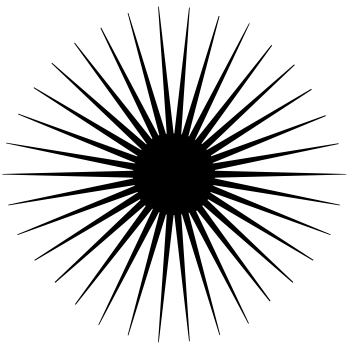


2/174 Breisgau

UR E

U
T

FORM FOLLOWS FUTURE



5

Editorial

6

Inspiration

18

Future Collection

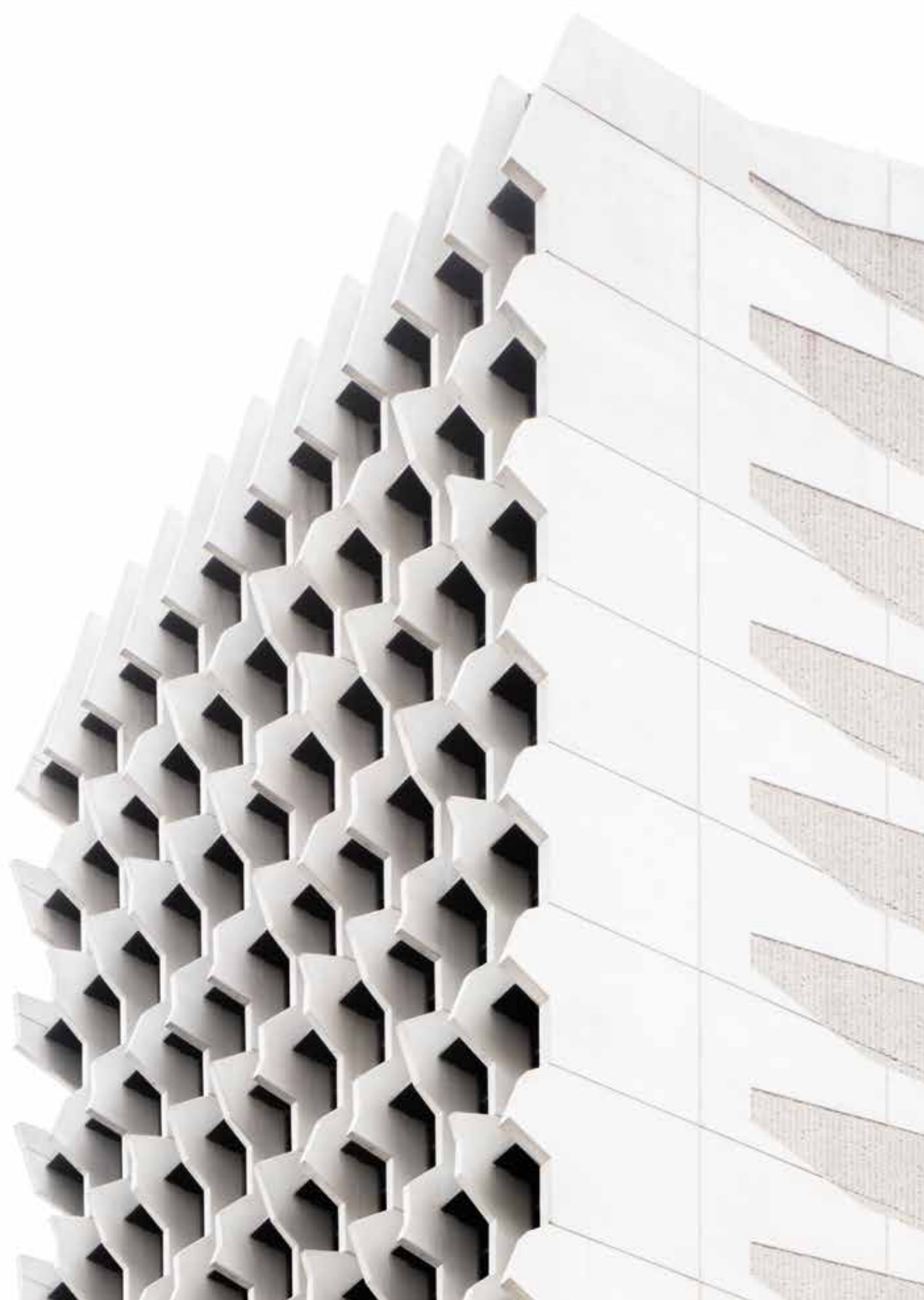
32

RECKLI *SELECT*

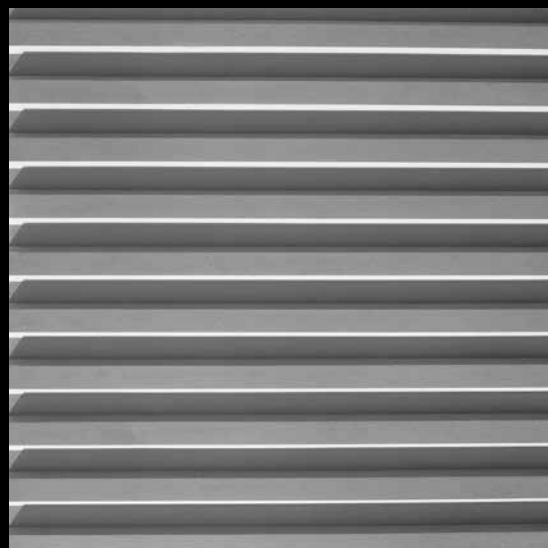
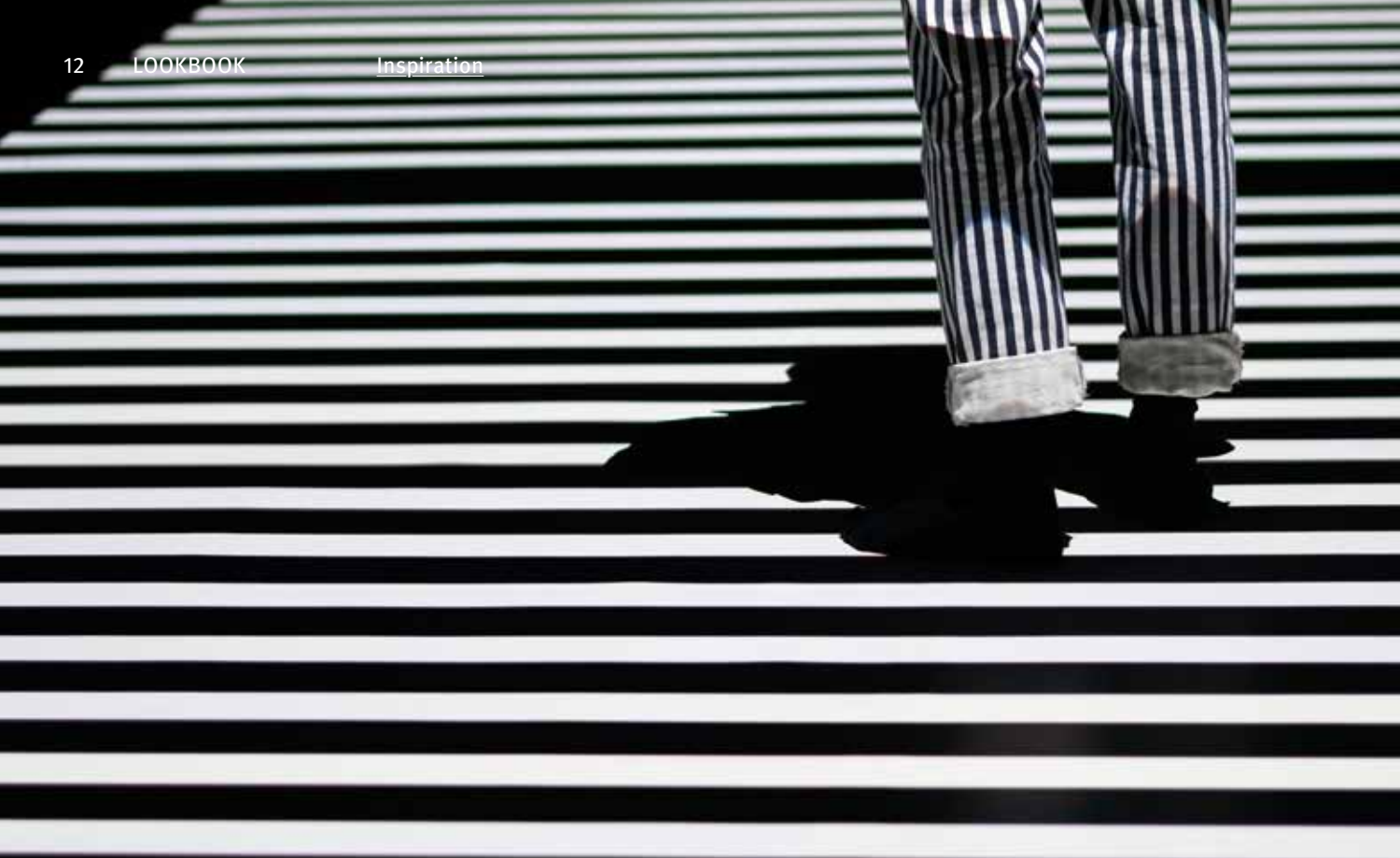
Architecture influences how we live and work. It can be revolutionary and generate new momentum.

The latest RECKLI Lookbook covers well-known surface textures and patterns, and translates them into modern designs under the principle of Form Follows Future. From custom patterns to geometric shapes, systematic or random arrangements: a selection of our 250 SELECT textures puts the seemingly familiar into a new context. Ribbed textures hold façades out towards the sky smoothly and cleanly. Abstract texture *Victoria* seems to play Tetris on the façade while giving it a completely unique look. Our abstract texture *Dachstein* is reminiscent of stacked building blocks coming together to form a new building – perfectly staged by nature's interplay of light and shadow.

Our *Future Collection* also presents three exclusive new textures designed from the perspective of Form Follows Future. Get inspired and design the future!



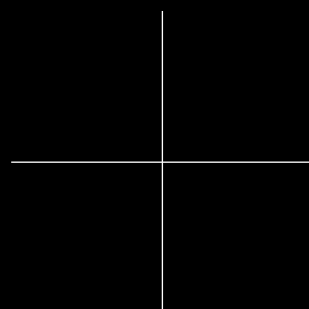




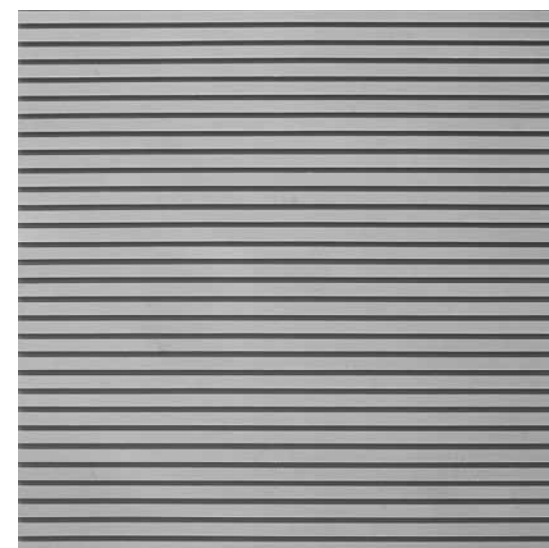
1/31 Rib Type C

RECKLI SELECT → [Ribs & Waves](#)

A clear and smooth rib pattern with vertically aligned ribs, separated by 40-millimeter wide joints.



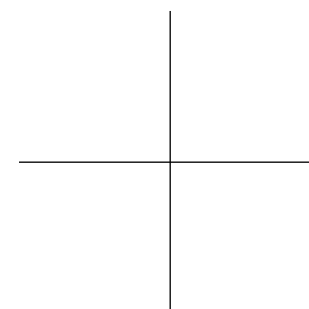
What role does the architect play in a global society?



2/77 Tigris

RECKLI SELECT → [Ribs & Waves](#)

A clear and smooth rib pattern with vertically aligned ribs, separated by 9-millimeter wide joints.

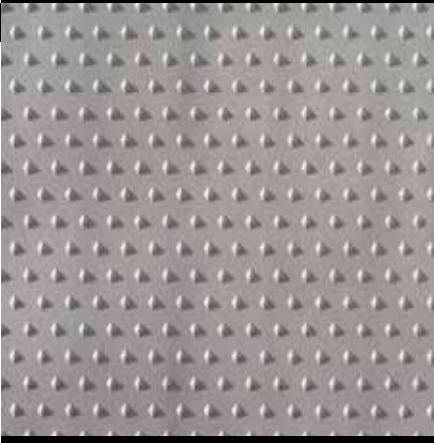




2/100 Year

TEX

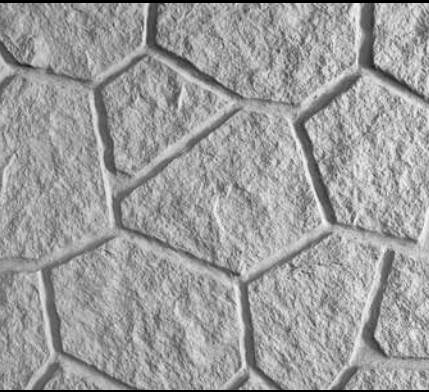
TEXTURE



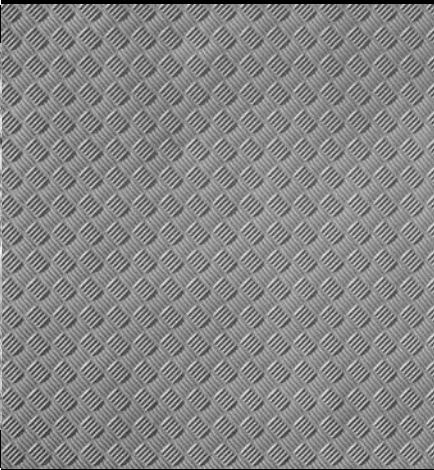
2/174 Breisgau

TEX

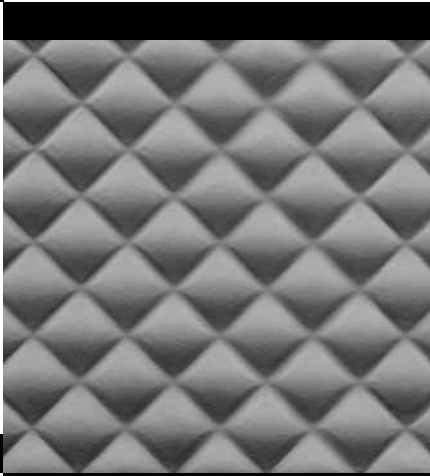
TEX



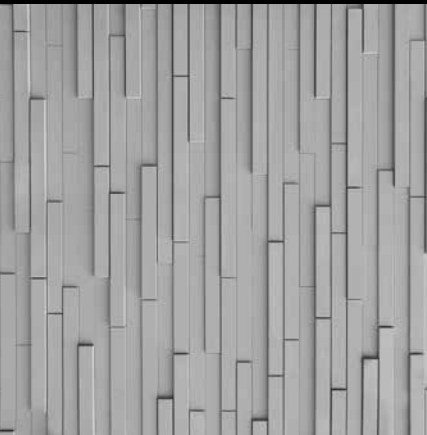
2/239 Sumatra



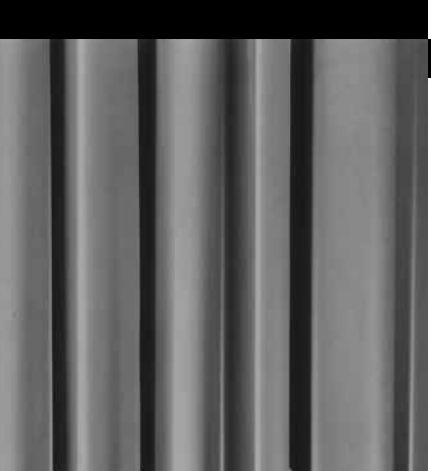
2/117 Ripple 5-Fold



2/210 Venezia



2/195 Gysenberg



2/701 Liberty

TEXTURE

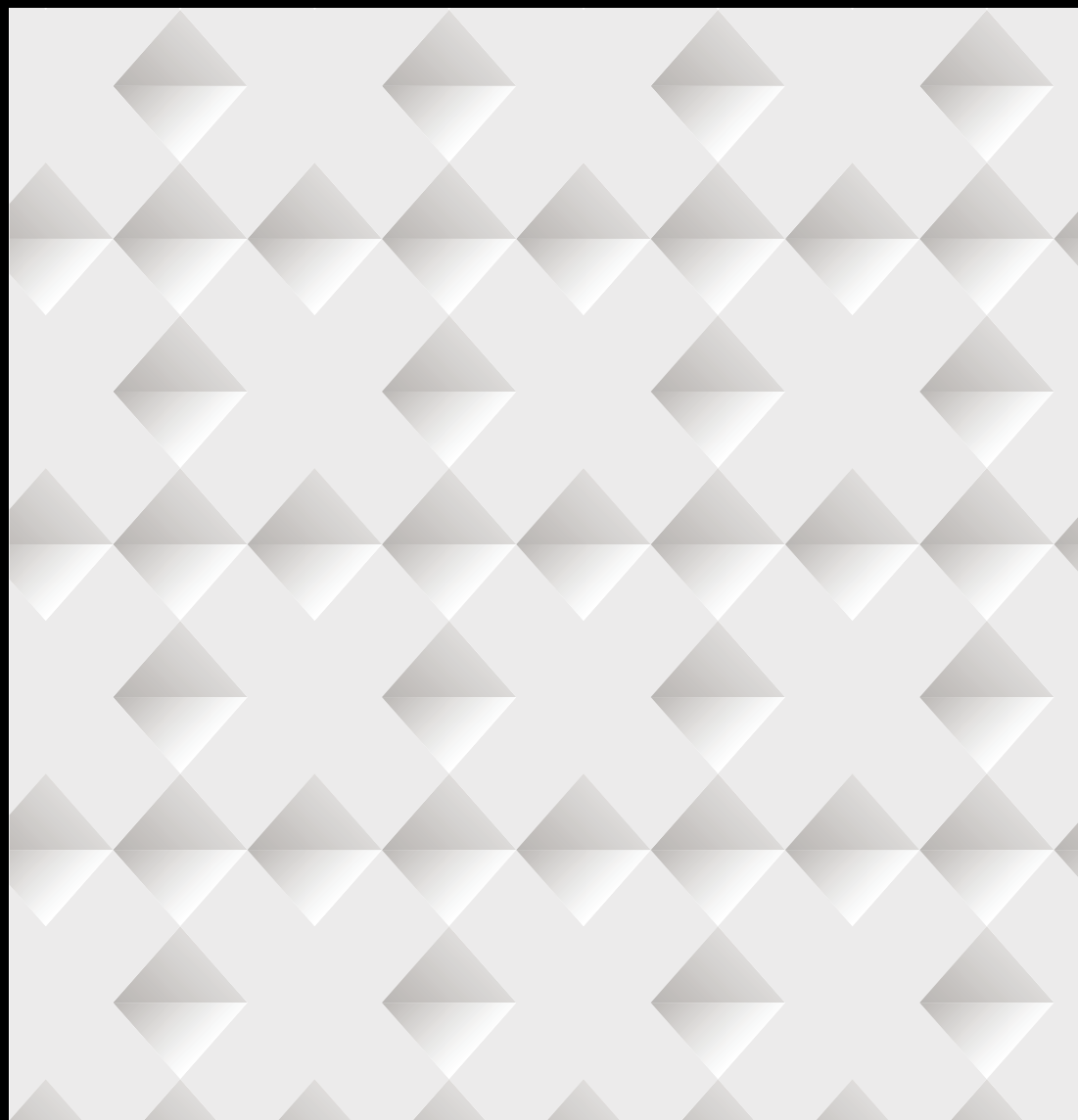
FUTURE COLLECTION

New
patterns



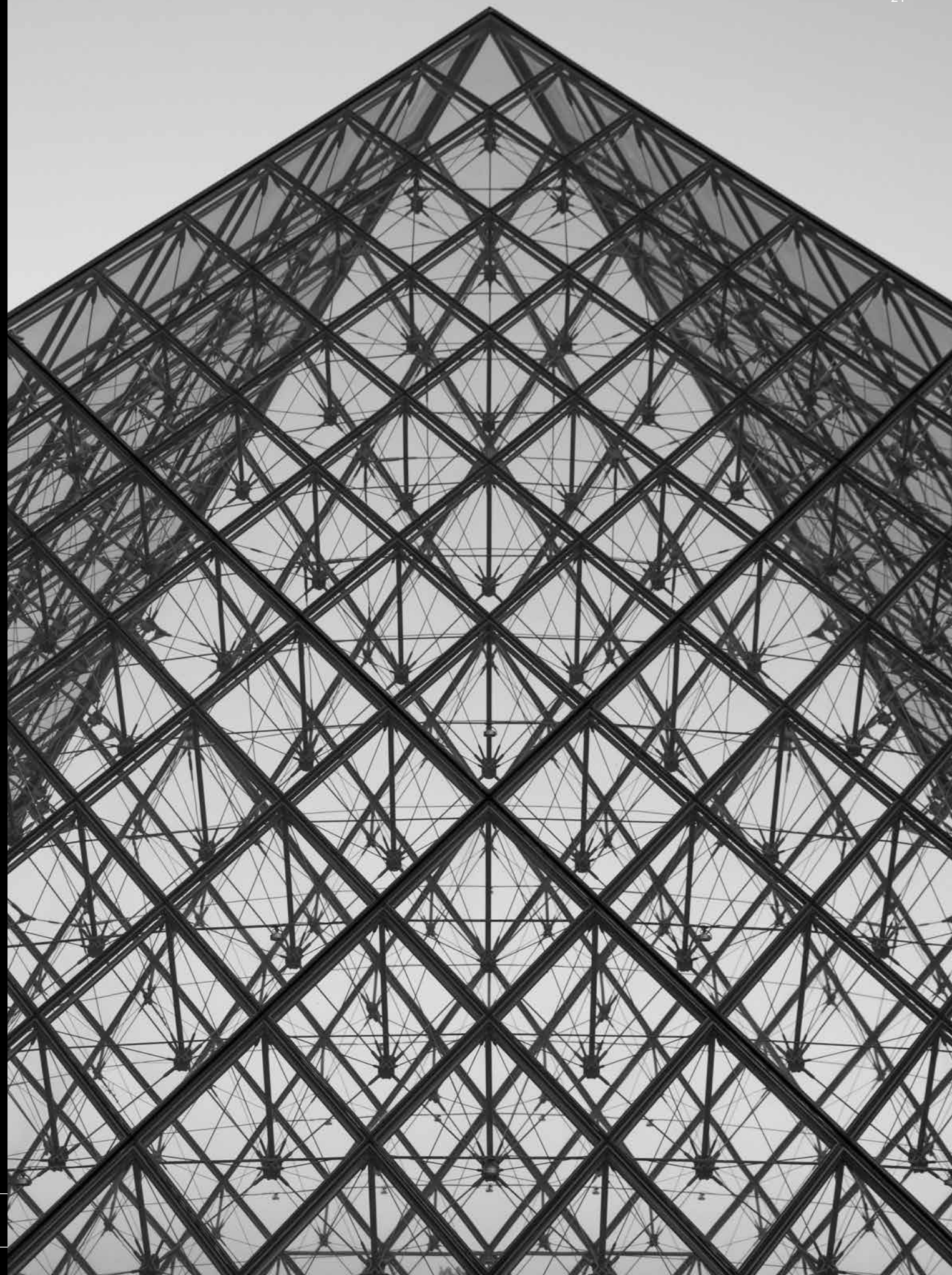
HAZE

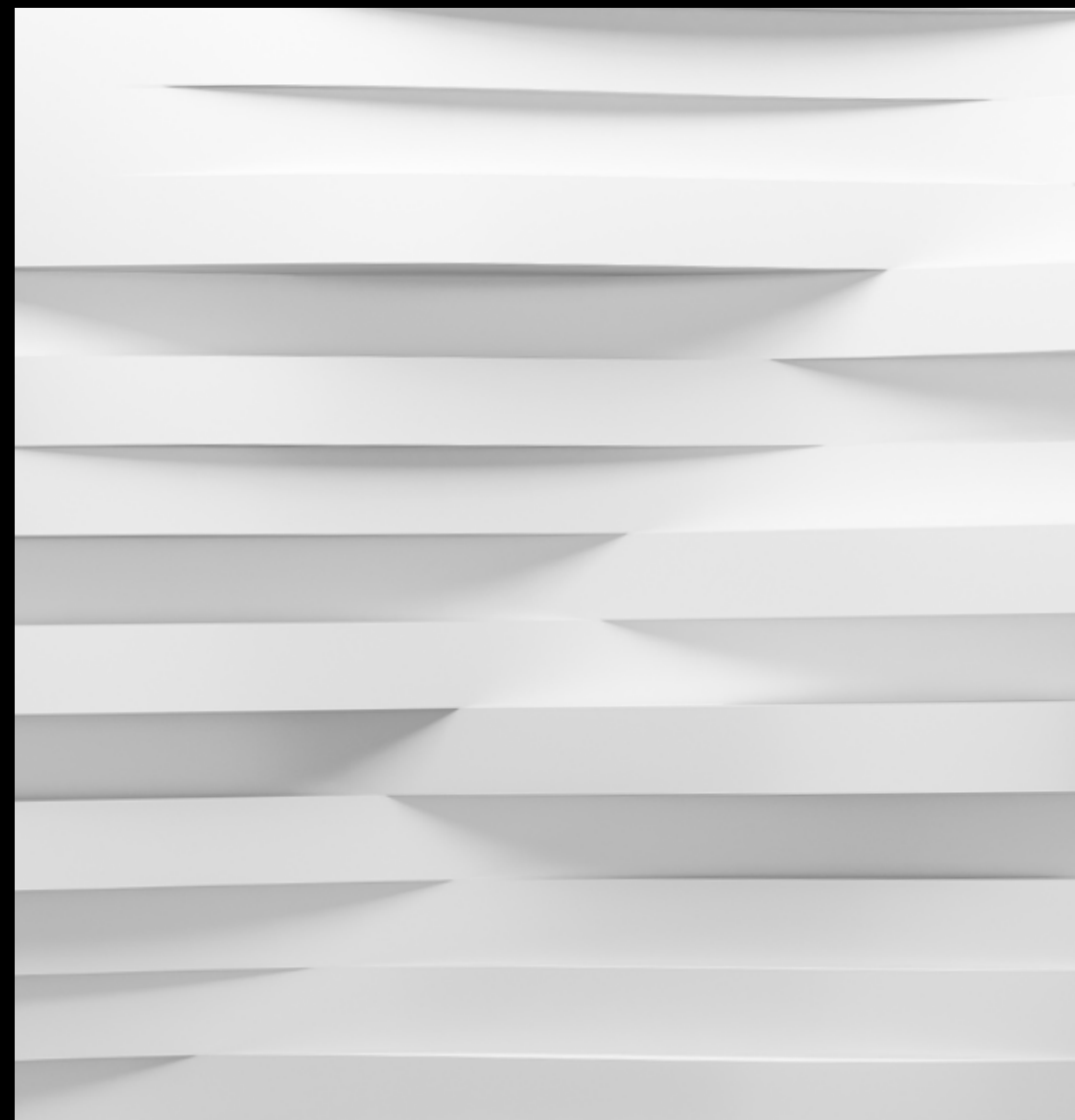
A shroud of mist or a rugged cliff face? This fantasy texture is made up of rows of polygons of various sizes, giving the finished surface a dominant ruggedness. Clean edges and corners create a heterogenous surface that will really come into its own on a façade.



TETRA

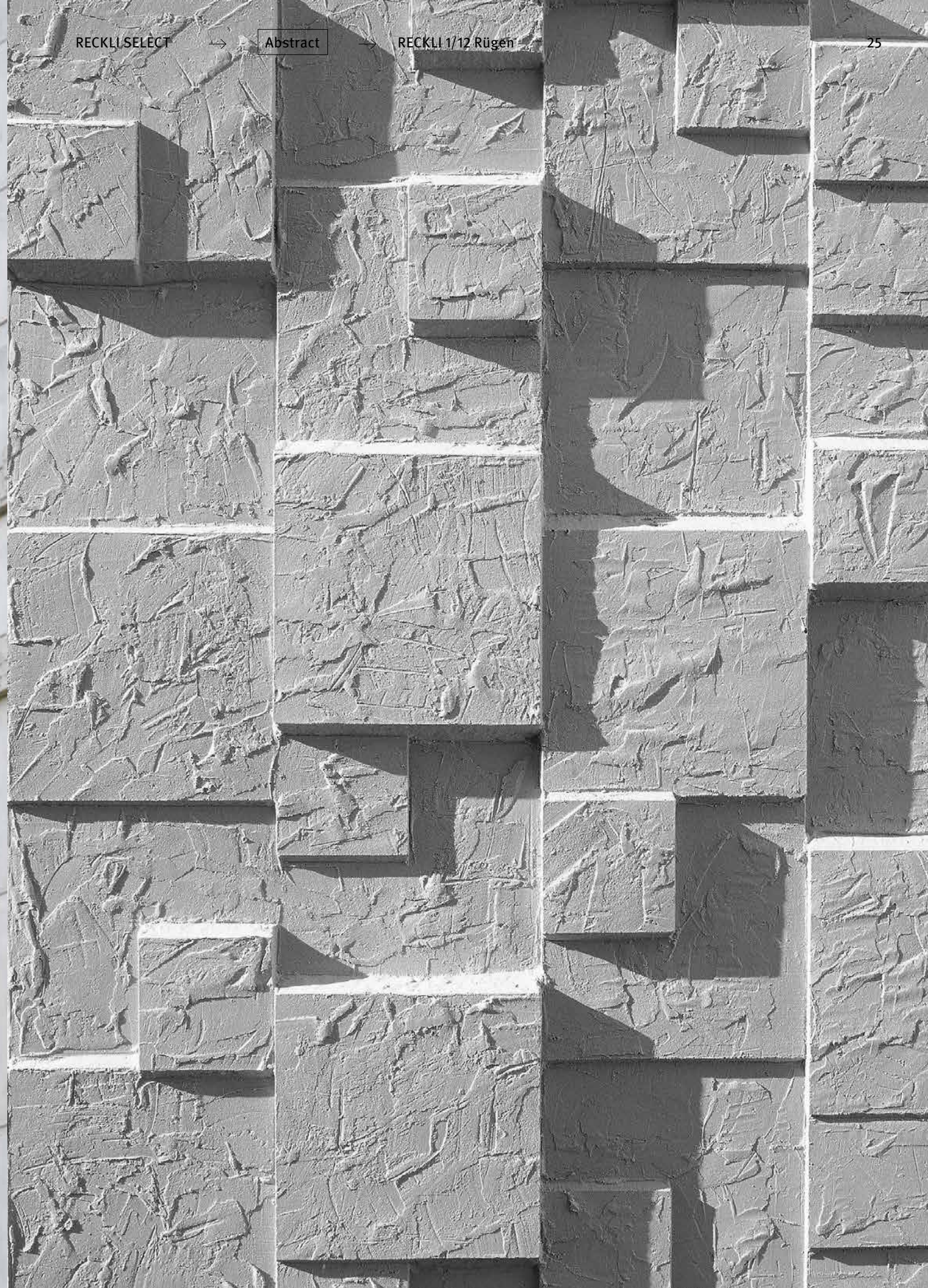
You could say this texture arose from the architecture of the Louvre's glass pyramids. The seamless, smooth and geometric surface with triangular cutouts gives this texture a truly architectural character.





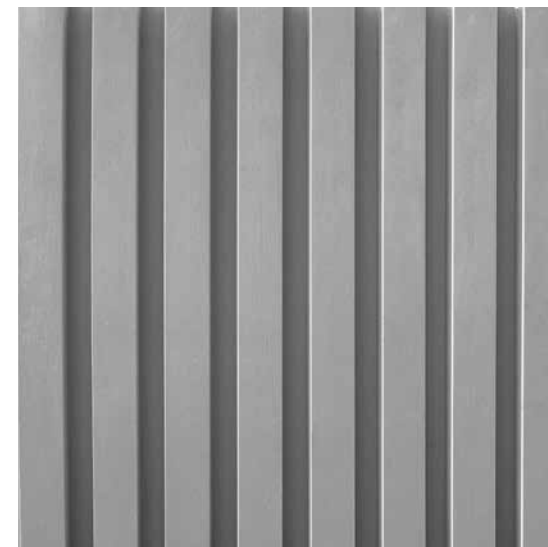
MOTION

Modern yet playful. This texture stands out through its smooth, horizontal lines. The lines' differing heights and depths generate additional tension, creating an abstract, geometric atmosphere.





Can architecture solve problems or just react to them?

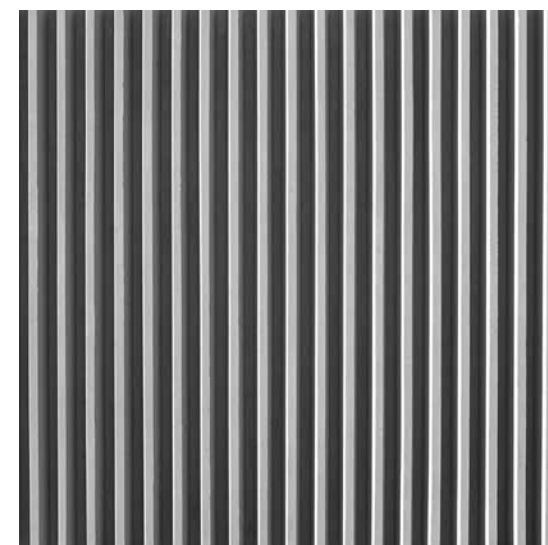


1/46 Rib Type N

RECKLI SELECT →

Ribs & Waves

A clear and smooth rib pattern with vertically aligned ribs, separated by 40-millimeter wide joints.

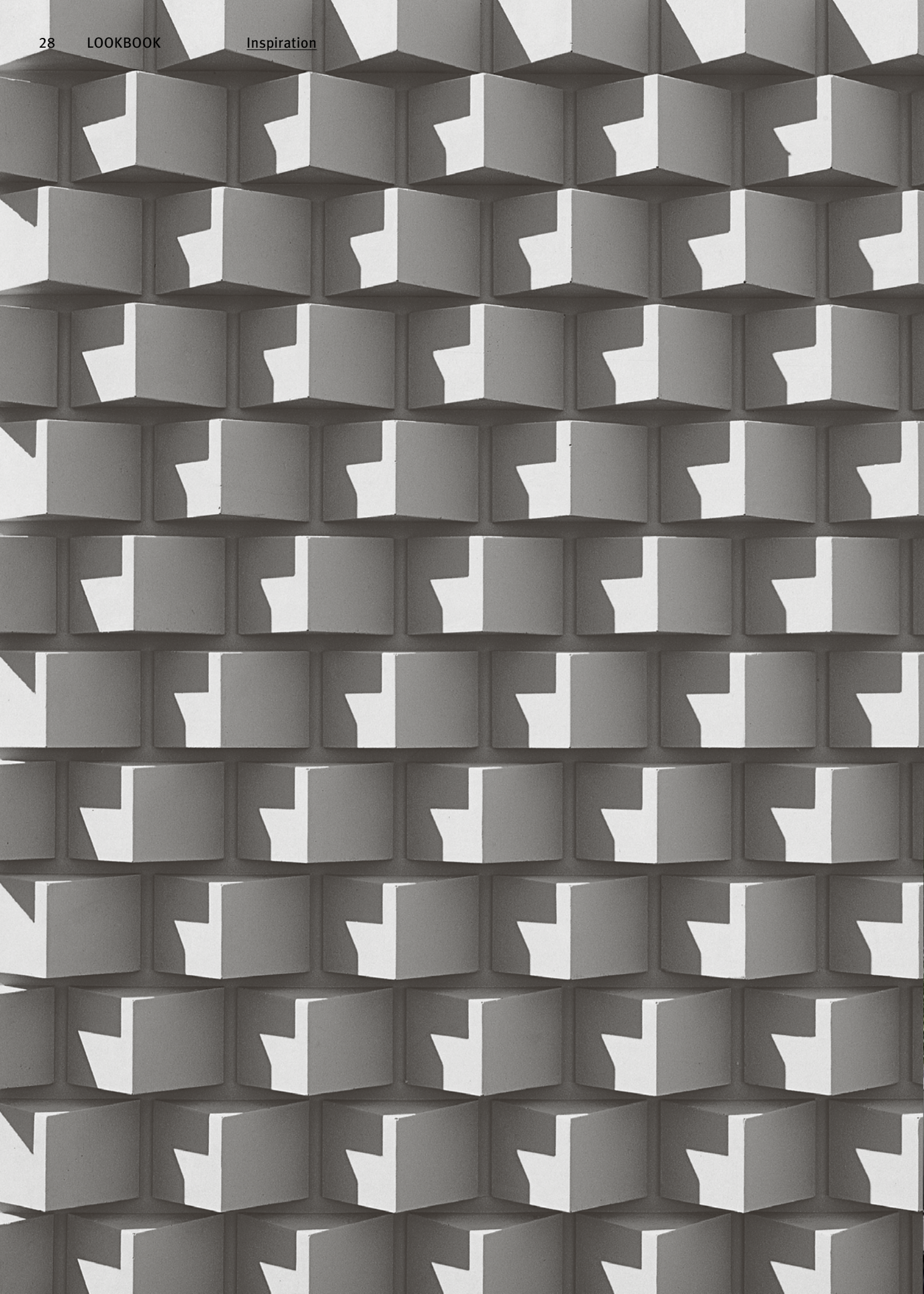


1/148 Lanzarote

RECKLI SELECT →

Ribs & Waves

A clear and smooth rib pattern with vertically aligned ribs, separated by 15-millimeter wide joints.



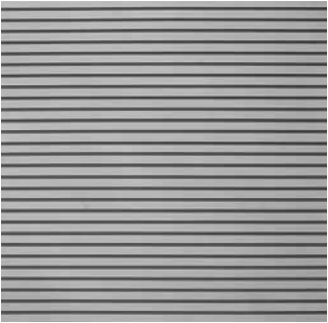
RECKLI *SELECT*



2/174 Breisgau

Abstract

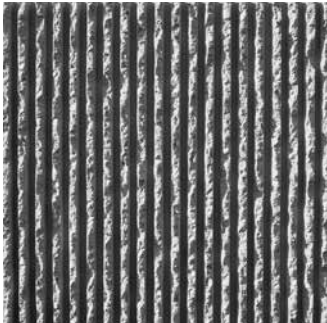
← P. 2, 15



2/77 Tigris

Ribs & Waves

← P. 13



1/41 B Ibiza

Ribs & Waves

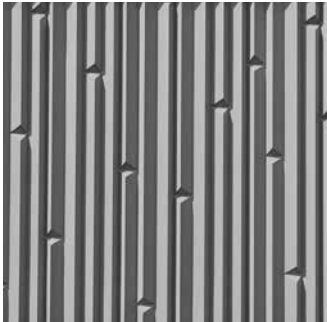
← P. 6



2/100 Jahreszahl

Functional

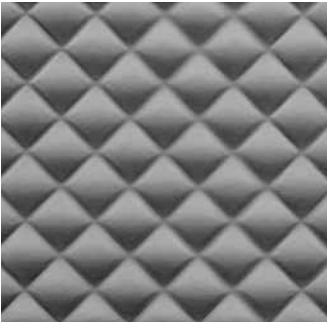
← P. 14



2/236 California

Abstract

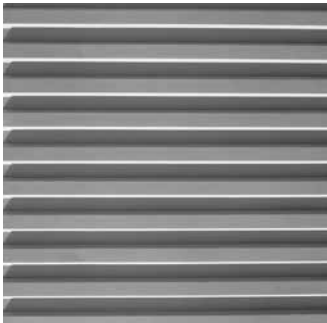
← P. 10



2/210 Venezia

Abstract

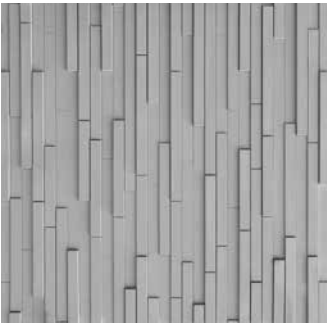
← P. 14



1/31 Rib Type C

Ribs & Waves

← P. 12



2/195 Gysenberg

Abstract

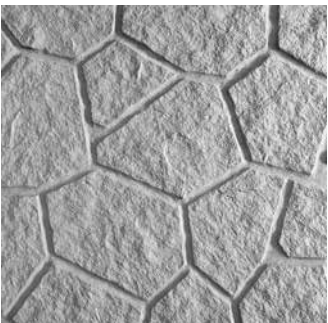
← P. 14



1/47 Rib Type P

Ribs & Waves

← P. 13



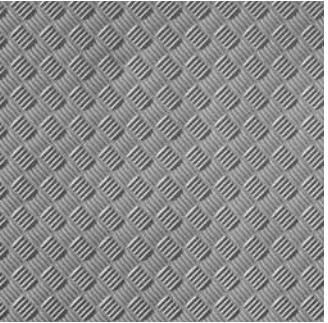
2/239 Sumatra

Stone & Masonry

← P. 15

For a complete overview of all formliners including all technical data please refer to:

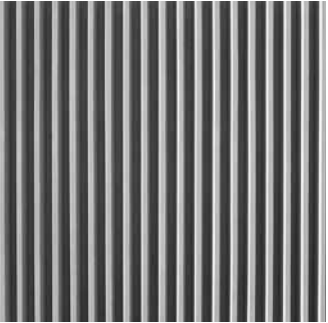
→ reckli.com



2/117 Ripple 5-Fold

Functional

← P. 15



1/148 Lanzarote

Ribs & Waves

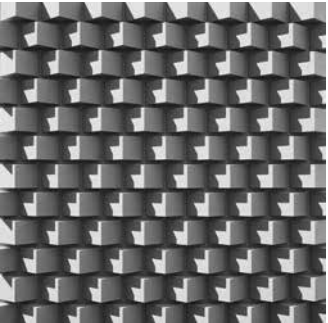
← P. 27



2/701 Liberty

Abstract

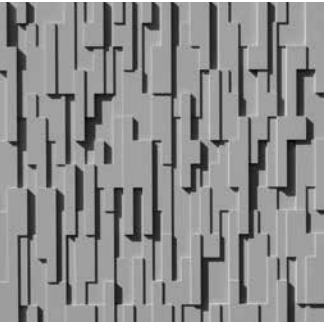
← P. 15



2/141 Dachstein

Abstract

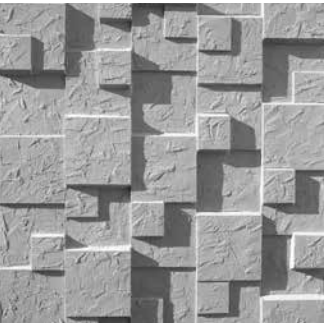
← P. 28



2/249 Victoria

Abstract

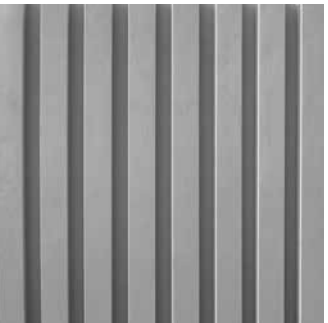
← P. 16, 17



1/12 Rügen

Abstract

← P. 25



1/46 Rib Type N

Ribs & Waves

← P. 27

RECKLI Lookbook #2
FORM FOLLOWS FUTURE
August 2021

Publisher
Reckli GmbH, www.reckli.de
Industriestraße 36, 44628 Herne, Deutschland
T +49 2323 17060, F +49 2323 170650

Lutz Hammer (Managing Director)
Corinna Uphaus (Director Marketing), marketing@reckli.de
Anna Habersack, Deniz Müller (Marketing)
marketing@reckli.de

Responsible Agency
ONEWORX GmbH, www.oneworx.de
Mathildenstraße 15a, 45130 Essen, Deutschland
Ina Bunge (Creative Direction), ina.bunge@oneworx.de
Jasmin Lörchner (Editor-In-Chief), jasmin.loerchner@oneworx.de

Printing
becker druck F.W. Becker GmbH, www.becker-druck-verlag.de
Grafenstraße 46, 59821 Arnsberg

Is architecture
there for
everyone?

