

## 2/69 MARNE

A pattern with a surface reminiscent of coarse roughcast. The granulation amounts to 0.62".

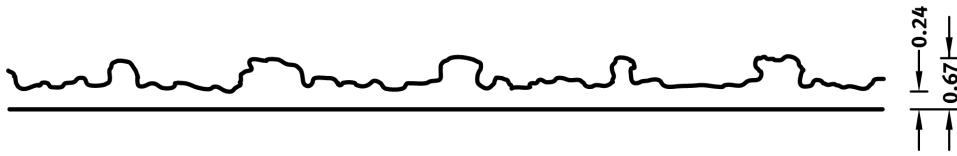
### DIMENSIONS

Uses	Dimensions (in)	Order Number
100	▲ 155.51 × ► 393.70	C 2069
10	▲ 49.21 × ► 393.70	E 2069

coarse rough cast up to 16 mm

100-timer formliners are supplied in an individual dimension within the maximum indicated dimensions.

The specified widths of the 10-timer and 50-timer formliners are a fixed dimension and ensure the continuity of the structure in the case of linear patterns. The longitudinal direction of the pattern is variable and can be ordered from 1 m up to the maximum dimension in 10 cm steps.



# US FORMLINER HEADQUARTERS

Do you have a question about our products  
and would like to get in touch? You can call us  
on the following number:

**706.549.6787**

US Formliner Inc.

370 Commerce Blvd.

Athens GA 30606

USA

Phone: 706.549.6787

[www.reckli.com/en/usa/](http://www.reckli.com/en/usa/)